

**SECTION BSD**

**STUD DAIRY CATTLE**

---

**SUPREME CHAMPION COW**

G.W. MARSTON MEMORIAL TROPHY

Sponsored by the Warburton Family

**DAIRY COMPETITION**

**JUNIOR HANDLER'S COMPETITION**

TO BE JUDGED ON PRESENTATION AND HANDLING OF ANIMAL

HEIFER MUST BE 18 MONTHS AND UNDER

JUDGING TO COMMENCE AT 9.00AM

**ENTRY FEE: FREE**

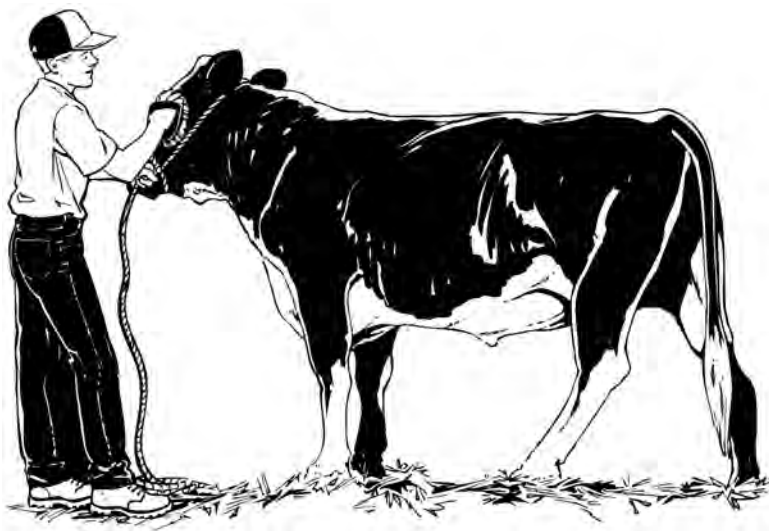
**SPONSORED BY LA & MA GIGLIA**

1:JHD Girl or Boy, under 11 years

2:JHD Girl or Boy, 11 years to 15 years inclusive

3:JHD Girl or Boy, 16 years to 20 years inclusive

**NO CHAMPIONSHIP**



## **SECTION BSD – Stud Dairy Cattle**

---

### **CONDITIONS OF ENTRY**

1. Cattle registrations must be presented to breed inspectors prior to Judging on morning of the Show.
2. All cattle entering the Show must be **NLIS** tagged and accompanied by a current Movement Weigh Bill. To be handed into the Stock Office.
3. Correct attire must be worn by paraders, i.e. black trousers, white shirt or coloured "T" shirt with Stud Logo.
4. Exhibitors must record the birth date of all their competing Heifers on their entry form when entering shows.
5. Heifers must be paraded in order of age when competing.
6. JUDGING to commence at 9.00am finished by 3.00pm approx.
7. GRAND PARADE – Please be ready for parading by 3.00pm.
8. Livestock exhibits may be removed from the Grounds after the Grand Parade.
9. Entry Fee \$5.00. Entries close Friday 15th October, 2010.
10. Please post entry form and fee to:

**Brunswick Agricultural Society,  
PO Box 70, Brunswick Junction, WA 6224.**

Entries can also be phoned or faxed to the office show week:

**PH: (08) 9726 1244, Fax: (08) 9726 1990**

### **SPONSORS:**

AGRIGENE

A.B.S. AUSTRALIA

WESFARMERS FEDERATION  
INSURANCE

GREEN FIELDS HOLSTEINS

BRUNSWICK VETERINARY SERVICES

CAMPBELLS CLEANTEC

SEMEX AUSTRALIA

SOUTHERN SUB BRANCH  
HOLSTEINS

MELVILLE PARK HOLSTEINS STUD

FRANCIS DEVLIN MEMORIAL

JERSEY SOCIETY ASSOCIATION

KETTRIDGES

FARMWEST SERVICES LTD

GENETICS AUSTRALIA

KITCHEN FARM / CARENDA  
HOLSTEIN

## **SECTION BSD – Stud Dairy Cattle**

---

### **HOLSTEIN FRIESIAN**

**Stewards:** Andrea Shine, Donna Kitchen, Flo Kitchen, Brother Thornton, Rod Brasher

**ENTRY FEE:** \$5.00

**PRIZE MONEY:**

**Classes 1-6 and 10:** First \$30.00, 2nd \$15.00, 3rd \$5.00,

**Classes 7-9 and 11-13:** First \$50.00, 2nd \$25.00, 3rd \$10.00,

**Class 14:** \$50.00

- BD1.** All Australian Calf Class – (calf to be less than 12 months and handler to be less than 17 years on day of Show)
- BD2.** Heifer, born during 2010
- BD3.** Heifer, born between 1/7/2009 and 31/12/2009
- BD4.** Heifer, born between 1/1/2009 and 30/6/2009
- BD5.** Heifer, born between 1/7/2008 and 31/12/2008 dry  
JUNIOR CHAMPION  
RESERVE JUNIOR CHAMPION
- BD6.** Female, born between 1/1/2007 and 30/6/2008, dry
- BD7.** Female, born between 1/5/2008 and 31/12/2008, in milk
- BD8.** Female, born between 1/1/2008 and 30/4/2008, in milk
- BD9.** Female, born during 2007, in milk  
INTERMEDIATE CHAMPION  
RESERVE INTERMEDIATE CHAMPION
- BD10.** Female, born before 1/1/2007, dry
- BD11.** Female, born during 2006, in milk
- BD12.** Female, born during 2005, in milk
- BD13.** Female, born before 1/1/2005, in milk
- BD14.** Best Udder class (selected by Judge from milk classes)  
No entry necessary (One award only)  
SENIOR CHAMPION  
RESERVE SENIOR CHAMPION  
GRAND CHAMPION EXHIBIT
- BD15.** Three (3) females in milk, any age owned by Exhibitor

## **SECTION BSD – Stud Dairy Cattle**

---

### **BROWN SWISS/GUERNSEY/JERSEY/ILLAWARRA**

ENTRY FEE: \$5.00

#### **Prize Money:**

**Class 16:** First \$20.00, 2nd \$10.00, 3rd \$5.00

**Classes 17 – 20:** First \$30.00, 2nd \$15.00, 3rd \$5.00

**Classes 21 – 24:** First \$50.00, 2nd \$15.00, 3rd \$5.00

**Class 25:** \$25.00

#### **Please indicate breed on entry form with class number**

**BSD16.** Heifer born during 2010

**BSD17.** Heifer born between 1/7/2009 – 31/12/2009

**BSD18.** Heifer born between 1/1/2009 – 30/6/2009

**BSD19.** Heifer born during 2008 – DRY

JUNIOR CHAMPION (Classes 16 – 19 inclusive)

RESERVE JUNIOR CHAMPION

**BSD20.** Cow – Dry born before 1/1/2007

**BSD21.** Cow or Heifer in milk born during 2008

**BSD22.** Cow in milk born during 2007

**BSD23.** Cow in milk born during 2006

**BSD24.** Cow in milk born before 1/1/2006

SENIOR CHAMPION FEMALE (Classes 20 – 24 inclusive)

**BSD25.** Cow with best shaped udder (entries to be selected by the Judge from milk classes)

### **JERSEY**

Junior Champion: \$25.00, Senior Champion: \$25.00

